

AI Guidance: ^{a very brief} Overview

Tolleson Union High School District



We believe that generative AI will play a crucial role in preparing students to thrive in a rapidly changing world. Our district is dedicated to meeting students where they are, recognizing the diverse levels of understanding within our community. By using generative AI ethically, we aim to equip students with the skills and knowledge necessary for college, careers, and life. This approach will enhance communication and partnerships, fostering collaboration and innovation.

Generative AI?

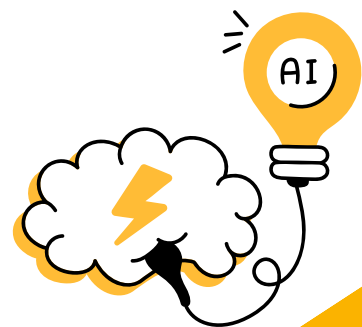
Generative AI is a type of artificial intelligence that uses advanced algorithms and machine learning techniques to create unique content, like images, music, and language. It works by mimicking human thought processes and responding to specific prompts to generate large sets of data. This technology is changing how we create and interact with digital content, offering exciting opportunities for innovation and learning.

Unacceptable Use

- Generate complete assignments for submission of original student work
- Cheat on assessments, quizzes, or tests
- Fabricate or falsify information, citations, or data
- Create or share harmful content, such as harassment, bullying, or impersonation
- Plagiarize or use uncredited AI-generated content as original work

Acceptable Use

- Brainstorming ideas for projects or essays
- Receiving feedback on grammar or writing structure
- Summarizing readings or taking notes
- Practicing academic skills (vocabulary, language comprehension, etc.)



AI Guidance: ^{a very brief} Overview Instruction & Learning

Educators

- Use AI tools to collect and evaluate student data leading to more personalized support.
- Can be used to streamline feedback and student assessment allowing for more opportunities for building relationships and creating content.
- Grading and writing feedback can be supported with AI allowing it to be more immediate.

Students

- Students can access content at their level, Lexile, or language supporting academic enrichment.
- Students using AI as a tutor can open time for high level thinking and problem solving.
- Students can receive real time feedback while learning rather than at then end.



AI Use Botlight

Still unsure as to when to use AI? Allow this graphic to assist you on when AI is acceptable within the classroom.

Red light: AI Use Not Allowed

- Your work should be completely original
- You should not use AI for planning or drafting
- Using AI would defeat the purpose of this task, assignment, or assessment.

Yellow Light: AI Use Allowed With Citation

- You can use AI for this task or assignment but you MUST give credit to the AI tool.
- Please follow your instructor's guidance regarding citing and crediting the AI tool.

Green Light: AI Use Allowed Without Citation

- You can use AI for this task, assignment or assessment and you do not need to cite it, but we encourage that you do.
- The use of AI does not significantly impact the originality of your work.

