



GENERATIVE AI PROMPTING for Teachers

P

PURPOSE

What is the purpose/goal of the prompt?

Example: "I need a detailed lesson plan on the causes and effects of World War II that includes student analysis."



R

RELEVANCE



What is the context of the prompt? Why is it important?

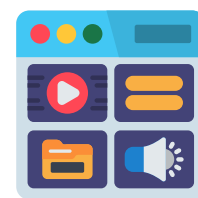
Example: "This lesson plan is for my world history class to help students understand the significant events and impacts of World War II and develop their analytical skills."

O

OUTPUT ORGANIZATION

How should the output be structured, organized, or formatted?

Example: "The lesson plan should include an introduction, key events, major figures, and a conclusion. It should also have discussion questions and activities that require students to analyze the causes and effects of World War II."



M

MATERIALS



What sources or content should AI reference to create the output?

Example: "Use my history textbook, reputable history websites, and any primary source documents available."

P

PRESENTATION

In what tone and style should the output be presented?

Example: "Please write the lesson plan in a formal and informative tone suitable for high school teachers and administrators."



T

TARGET AUDIENCE



Who is the intended audience? Who will be reading or using the information?

Example: "The audience is my world history class, consisting of high school students."

Example of Full Prompt: For my world history class, I would like a detailed lesson plan on the causes and effects of World War II that includes student analysis. This lesson plan will help students understand the significant events and impacts of World War II and develop their analytical skills. Please create a lesson plan that includes an introduction, key events, major figures, and a conclusion. It should also have discussion questions, activities, and a project that require students to analyze the causes and effects of World War II. Use my history textbook, reputable history websites, and any primary source documents available. Write the outline in a formal tone suitable for high school teachers and administrators.