



# TUHSD

+ COPILOT



## GUIDE FOR TUHSD STAFF

**What are the most important things for me to know about Gen AI usage in our schools?**

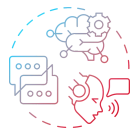


## GENERATIVE AI BASICS



### WHAT IS GENERATIVE AI (GEN AI)?

Generative AI is a type of artificial intelligence that uses advanced algorithms and machine learning techniques to create unique content, like images, music, and language. (TUHSD Gen AI Guidance Document Pg. 5)



### HOW DOES GEN AI WORK?

Gen AI works by mimicking human thought processes and responding to specific prompts to generate new and original outcomes from large sets of data. This technology is changing how we create and interact with digital content, offering exciting opportunities for innovation and learning. (TUHSD Gen AI Guidance Document Pg. 5)



### WHAT ARE WE USING?

TUHSD staff have access to M365 Copilot, a Microsoft Gen AI solution that ensures safety and data security at the institutional level. Teachers may also use Quizizz's AI tools to support their instructional needs. (TUHSD Gen AI Guidance Document Pg. 9)

## SHOULD I BE WORRIED ABOUT MY STUDENTS' DATA?

Protecting student data is our priority! By using M365 Copilot and Quizizz, teachers and staff are able to keep student data secure. (TUHSD Gen AI Guidance Document Pg. 9)



## DATA SAFETY

Remind your students to never enter their personal information into any AI websites or apps.

## ETHICAL USE OF GEN AI

Using Generative AI ethically in education means supporting, not replacing, professional expertise while ensuring materials are accurate, inclusive, and aligned with academic standards. Transparency, data privacy, and intellectual integrity are key to building trust and using AI responsibly in the classroom. (TUHSD Gen AI Guidance Document Pg. 13-14)



## ADDITIONAL RESOURCES

- [TUHSD Generative Artificial Intelligence: District Guidance for All](#)
- [Generative AI Brief Overview](#)
- [Teacher Gen AI Botlight](#)
- [Generative AI Prompting for Teachers](#)
- [Best Practices for Gen AI Use](#)
- [Citing Gen AI in Assignments](#)
- [Link to Teacher Support Form](#)