



TUHSD

+ COPILOT



GUIDE FOR TUHSD STUDENTS

What are the most important things for me to know about Gen AI usage?



GENERATIVE AI BASICS



WHAT IS GENERATIVE AI (GEN AI)?

Generative AI is a type of artificial intelligence that can create new content, such as images, music, or writing. Gen AI is transforming the way we create and use digital content, opening up new possibilities for creativity, learning, and innovation. (TUHSD Gen AI Guidance Document Pg. 5)



HOW DOES GEN AI WORK?

Gen AI learns from large amounts of data and uses that knowledge to produce original results based on the prompts it receives. This technology works by imitating how people think and come up with ideas. (TUHSD Gen AI Guidance Document Pg. 5)



WHAT ARE WE USING?

TUHSD staff have access to M365 Copilot, a Microsoft Gen AI solution that ensures safety and data protection. When permitted, students may use Copilot on Bing.com while using their district computers. (TUHSD Gen AI Guidance Document Pg. 9)

SHOULD I BE WORRIED ABOUT MY DATA?



Protecting your data is our priority! By using M365 Copilot and Quizizz, your teachers are able to keep your personal data secure. (TUHSD Gen AI Guidance Document Pg. 9)

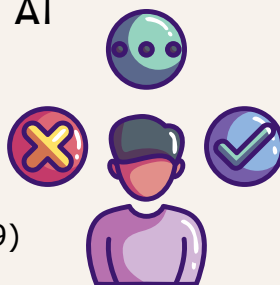
**DATA
SAFETY**

CAUTION
Do not enter personal identifiable information (PII) in AI sites or apps!

Think before you type—AI doesn't forget what you tell it. Once it's in AI, it's out of your hands. Keep your info safe.

ETHICAL USE OF GEN AI

Generative AI can boost your learning by helping you brainstorm, understand complex topics, and get feedback. But it should support—not replace—your own thinking, effort, honesty, and privacy. (TUHSD Gen AI Guidance Document Pg. 9)



ADDITIONAL RESOURCES

- [TUHSD Generative Artificial Intelligence: District Guidance for All](#)
- [Generative AI Brief Overview](#)
- [Student Gen AI Botlight](#)
- [Generative AI Prompting for Students](#)
- [Citing Gen AI in Assignments](#)