



PLEASE RETURN YOUR BALLOT BY NOVEMBER 1,
2025 CAPITAN MUNICIPAL SCHOOLS MILL LEVY FUND



VOTE

LOCAL SUPPORTERS OF
CAPITAN MUNICIPAL SCHOOLS

A **YES VOTE** Will Allow Your School to Address Major Facility Improvement Needs to Include:

- Construction of a new Gymnasium (*gains 1 Classroom*)
- Repurpose the existing Cummins Gymnasium (*gains 3 Classrooms*)
- Gaining Classroom Space is becoming a necessity as students are currently using the boardroom as a classroom.
- HVAC repairs/renovations

As Community Members,
We Know That Great
Schools are Vital to the
Future of our Local
Communities

- Schools are an economic driver and are what hold a community together
- Without quality, well-maintained and safe schools, our community will lose population and see reduced property values

A **NO VOTE** Will **NOT** Allow Your School to Address The Above-Mentioned Critical Facility Improvement Needs:

****Unlike Mill-Levy funds, which are used to maintain existing facilities, G.O. Bond revenues allow the District to create new and renovated spaces that support high-quality learning for students. ****

*****Important to Note: This tax will replace some current taxes and WILL NOT raise the current tax rate for property owners.*****

VOTE

www.NMVote.org

Return your ballot by **NOVEMBER 1, 2025 OR**
Vote in person on **NOVEMBER 4, 2025**

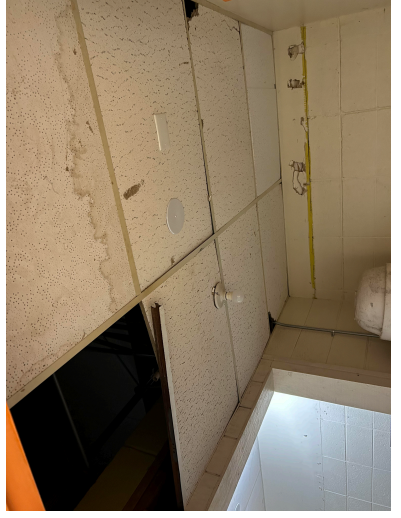


With your support we can
Lead, Educate, and Prepare
ALL Students

OR THIS.....



Do we want our
children learning in
facilities like this.....



Capitan Municipal Schools
P.O. Box 278
Capitan, NM 88316-0278