

East Haddam Elementary School

2024-2025 Proposed Budget



EHES is proud of the work we are doing - budget successes.

Reading resources and supports



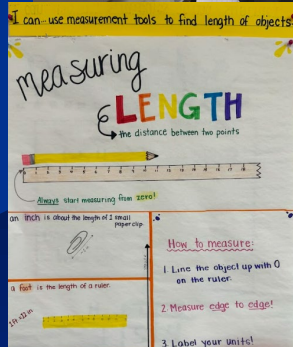
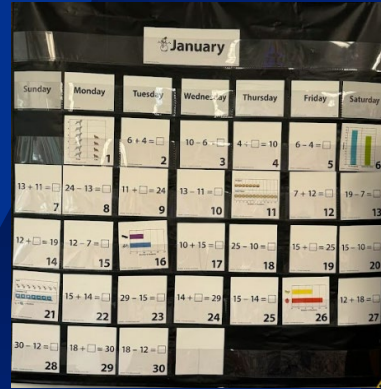
Additional Healthcare Support



EHES is proud of the work we are doing - budget successes.

Bridges Math PD and Curriculum Resources

Technology support, 1:1 chromebooks, web-based learning platforms



EHES is proud of the work we are doing - budget successes.

Preschool



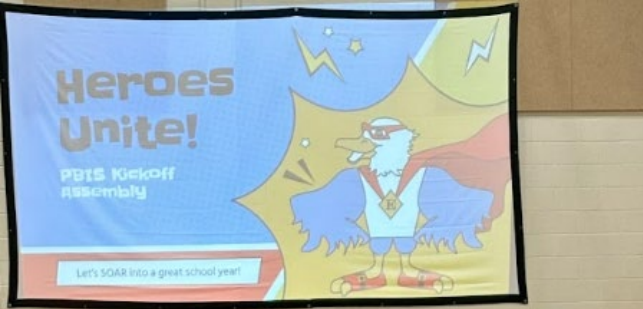
EHES is proud of the work we are doing- budget successes.



Field Trips



Expanding PBIS



Final Jeopardy!
What does it mean to show Ownership?



EHES is proud of the work we are doing-
budget successes.

Creative, modular learning
spaces



Budget Increases

Curriculum

Resources/Programming

- ⊙ State Approved Reading Curriculum
 - Potential offset with grant funds
- ⊙ Universal Screener
 - Potential offset year 1 with grant funds
- ⊙ Digital Resources Supporting Curriculum
 - PA, Phonics, SEL
- ⊙ Enrichment Program
- ⊙ Field Trips

General Supply Costs are up

- ⊙ Classroom materials
- ⊙ Custodial supplies
- ⊙ Office supplies

Digital Resources

Social Emotional Learning



Lesson plans

Performance tasks

Supplemental Resources

- ⊙ Songs
- ⊙ Videos
- ⊙ Enrichment activities

Universal Screener in Reading

DIBELS 8th Ed.

- ⊙ Benchmark
- ⊙ Progress monitoring
- ⊙ Comes of growth
- ⊙ Reports
- ⊙ Resources

Amplify.



Math Screener

Instructional Support



<https://www.readinga-z.com/>

BrainPOP Jr.

<https://jr.brainpop.com/>

Phonemic Awareness/ Phonics (approved)

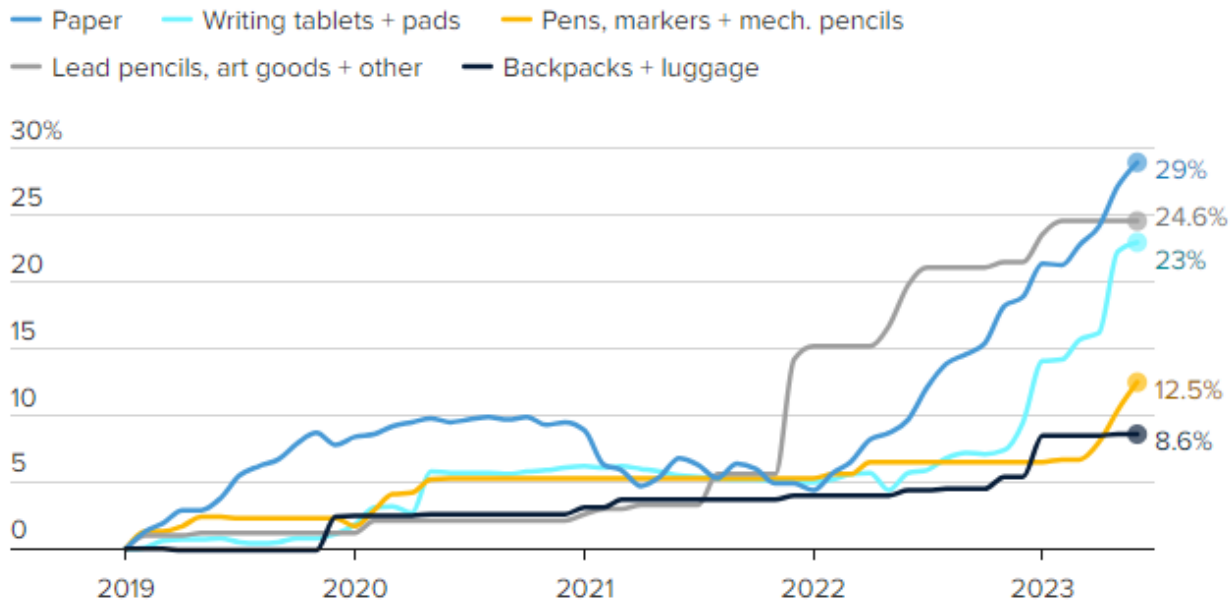
FUN HUB® + Foundations®



Feeling these increases

How much more expensive will it be to go back to school in 2023?

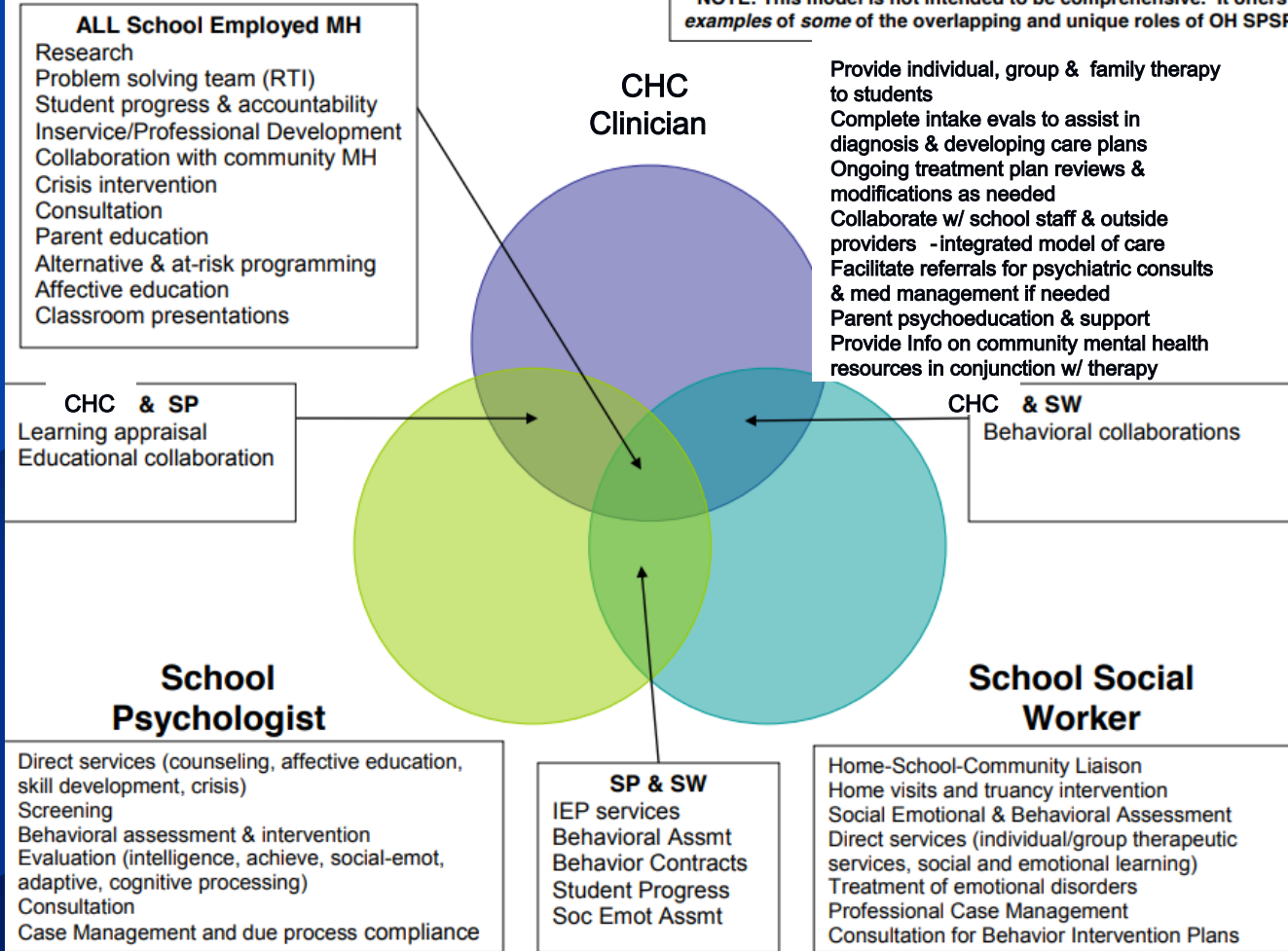
Percent change in price since 2019



Staff/ Salaries

1. PreK Teacher and Paraeducator
 - a. SMART Start for Recovery grant ends
2. Increase School Social Work position from .6 to 1.0
 - a. Mental health support, crisis support, family engagement/ support, proactive strategies/ lessons for teachers and students
3. Special Educator 1.0
 - a. Currently have 3 full time special education teacher (not including integrated PreK)
 - b. Shifting needs of students-sudden increase of high needs students requiring ABA model for instruction

*** NOTE: This model is not intended to be comprehensive. It offers examples of some of the overlapping and unique roles of OH SPSP**



Special Education at a Glance

- ◎ 17 students with 504 Accommodation Plans
- ◎ 50 Students with IEPs
 - 48 in the building
 - Potential for 8 additional students in the next few months
 - 4 students require ABA model
 - 4 students require intensive behavioral support

Thank you
for your
Support

